

KOMODO KRUISES



Mona Lisa is a traditional wooden "phinisi" schooner. Built in 1996, she was completely refurbished in 2006 with a modern teak wooden interior and the latest navigational and safety equipment. She is designed to comfortably lodge 12 people in six teakwood cabins. Her black-sailed silhouette is a well-known sight in the area.

The trips combine leisure sailing and diving in a way that makes Mona Lisa an ideal choice for both divers and non-divers; there is something for everyone. Dives are organized up to 5 times a day and are for all tastes and levels. Most dive sites are available for fantastic snorkeling and our guests also enjoy private excursions on white sand beaches, fishing and trekking escorted by park rangers to discover the wildlife on the islands. You will not be rushed either - Mona Lisa sets sails from Labuan Bajo in Flores, which eliminates the time-consuming and potentially boring traversals from Bali and saves more of your precious time for cruising around the islands at a relaxed pace. To arrive at Labuan Bajo, you will take a domestic flight from Bali.

There are six cabins, some of which can be configured either as double or twin share. Single travelers are catered for, provided that they are willing to share a twin cabin with another single guest. All cabins are air-conditioned and have an en-suite bathroom with a hot shower and a sink.

The teak interiors lend the ship a warm and welcoming atmosphere. The main deck comprises a salon which doubles as the dining room, and a library offering a collection of books about the local fauna, flora and history. There is also a TV and a DVD player for immediate viewing of your photos. The bar offers beer, wine and other alcoholic drinks. Mineral water, soft drinks, coffee, and tea are available 24h. On the upper deck there are deck chairs and space for relaxing both in the sun as well as in the shade. Meals are of international standard with a focus on seafood.

Mona Lisa carries sets of dive gear for rent, and Nitrox is also available at an extra cost (unlimited nitrox dives over seven days). The use of dive tanks and weights, snorkeling gear, sea kayaks, and fishing gear is included.

Mona Lisa has an Indonesian crew of nine and a multilingual cruise director, as well as an experienced dive master who knows the sites well.

Our main concern is safety on board. The vessel is fitted with all internationally required safety equipment and a well appointed first-aid box to treat all kinds of minor injuries. We have an agreement with an air-charter company in Bali using a sea-plane in case of emergency evacuation.



Komodo adventure program March to October 2008 (diver program) 7 days 6 nights

Day 1: Any Monday : North Komodo (night @ mooring Gili Lawa Darat)

- Flight Bali –Labuanbajo. Pick up from airport
- Speedboat transfer to the Mona Lisa boat (depending on sea conditions this nice speedboat ride takes about 45 minutes)
- Check out dive
- Darat Passage South: start your adventure on this pretty coral reef, swim with turtles, and watch coral trout, anchovies, small tuna and trevallies feed in the bay. Along the bottom of the slope fish life increases, and you'll see garden eels sway and white tip reef sharks sleep on the sandy bottom.
- Night dive inside Gili Lawa Darat bay



Day 2: Any Tuesday : North komodo (night @ Karang Makassar mooring)

- Darat Passage North, Gililawa Darat Island: the reef slope is very rich in marine life. Towards the channel, you can see turtles, a school of giant sweet lips, sharks and batfish.
- Crystal Rock: exhilarating and very colorful dive with excellent soft coral coverage. Expect clouds of anthias and scorpion fish, frog fish and moray eels.
- Castle Rock: admire curious batfish, schooling barracuda, trevally and mackerels. Numerous sea fans host pygmy seahorses.
- Night dive @ Karang Makassar mooring

We run this program non stop, it is possible to book and get in any day of the week for any number of days (price per night 274US\$ or 198 Euro

Day 3: Any Wednesday (night @ Pantai Merah mooring)

- Batu Bolong: this reef is covered with colorful corals, invertebrate life and brilliant reef fish. Observe napoleon wrasse, dogtooth tuna, and rainbow runners...
- Tatawa Kecil: rocks, caves, and beautiful coral gardens grace the reef on the western side of the island. The highlights of this dive are definitely the dugongs and manta rays.
- Snorkeling for mantas
- Sailing to Pantai Merah
- Batu Tiga: an excellent "big fish" dive. Large boulders in deeper water to the west offer excellent habitat for grouper, mantas, giant trevally, and other pelagic fish.
- Night dive at Pantai Merah



Day 4: Any Thursday (night @ Pulau Padar)

- Pantai Merah/Pink Beach: you will encounter a great variety of fish here, and a good selection of critters such as leaf scorpion fish, blue ribbon eels, crocodile fish, and nudibranchs.
- Optional hike to see the Komodo Dragons. This magnificent reptile is one of the few remaining links to the days when dinosaurs roamed the planet...
- Pinnacle dive (bay): critters
- Loh Namu: near the southern corner of this reef, large boulders spread out over the drop-off. Are you ready for large schools of coral trout, malabar groupers, huge Napoleon wrasse, and even a giant T gigas clam?
- Sailing to Padar, night dive at Padar



*Book now , any day , for as long as you like
(for trips less than 3 night an additional speedboat transfer fee of 15 US\$ one
way applies)*

Day 5: Any Friday (night @ Pulau Padar)

- Pillaarsteen: amazing reefs cape. Large schools of fusiliers swim along the reef slope, which is covered with a magnificent variety of soft corals. Be prepared for sharks and turtles!
- Three Sisters / Tiga Dara: a pristine reef with excellent coral coverage and rich fish life.
- The Padar Rock (critter dive)
- The Padar Rock (night dive)



Day 6: Any Saturday (Night @ Karang Makassar or Gini Lawa Darat)

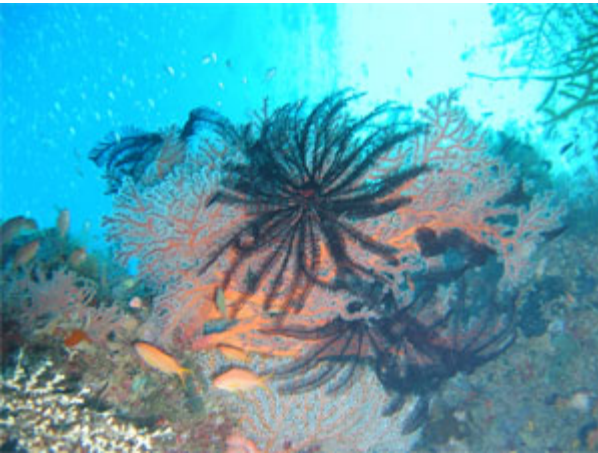
- Payung Island: If you're looking for a different experience, you've found it! This unique underwater landscape with its huge rocks, canyons and crevices to explore, will give you the illusion of a wreck dive. Fish and invertebrate life is diverse and abundant: big schools of surgeons and yellow snappers, rocky reefs covered with soft coral, gorgonians and feather stars.
- Indihiang: this is drift-diving paradise: many big fish and good coral diversity can be seen along the steep walls. Top attractions include potato cod, large Napoleon wrasse and schools of giant trevallies and snappers.
- Sailing to Karang Makassar/ snorkeling
- Mini Wall: the whole north face of this island is great diving: garden eels on the sandy slopes, shrimp gobies and sweet lips. With some luck, you'll spot some mandarin fish in the beautiful coral gardens.



*From Bali to the heart of komodo in 3 hours,
contact us for booking local flights*

Day 7: Any Sunday (night @ mooring Gili Lawa Darat)

- Returning customers transfer to Labuanbajo
- Guests that stay on board, chose between diving the Darat Passage, Tatawa Besar, Tatawa Kecil, Crystal Rock or Castle Rock before returning to Gili Lawa Darat for the night (night dive possible in GLD)



Komodo adventure program March to October 2008
(non diver program) 7 days 6 nights

We run this program non stop , it is possible to book and get in any day of the week and for any number of days (price per night 224 US\$ pp or 162 Euro)

Day 1: Any Monday : North Komodo (night @ mooring Gili Lawa Darat)

- Flight Bali –Labuanbajo. Pick up from airport
- Speedboat transfer to the Mona Lisa boat (depending on sea conditions this nice speedboat ride takes about 45 minutes)
- Welcome drink, lunch and check in. Start your adventure immediately and go beach combing and snorkeling around the tropical paradise of Gili Lawa Darat.
- Hike uphill on Gili Lawa Laut in the late afternoon and enjoy a spectacular view and sunset over the surrounding islands of the Komodo National Park.



Day 2: Any Tuesday : North komodo (night @ karang makassar mooring)

- After breakfast, go for some world class snorkeling on Gili Lawa Laut and relax on the gorgeous white sand beaches of this island.
- Go ashore on Komodo Island for a wonderful hike through the bush, looking for flying foxes, wild birds, and other extraordinary fauna and flora.
- In the afternoon, we set sail for Karang Makassar. The highlight here is a manta ray cleaning station. Bring your cameras, because this is an experience you'll never want to forget!



*Please note diving is possible (optional) anytime
(see our diving program for possible dives during
your trip)*



Day 3: Any Wednesday (night @ Pantai Merah mooring)

- In the early morning, enjoy the nice idyllic beach on Karang Makassar, put on your snorkel, and submerge in the wonders of the underwater world. With some luck, you'll again be swimming with mantas.
- After lunch we sail to Pantai Merah, and if the weather gods are with us, we raise all the sails and turn of our main engine... There are of course plenty of possibilities to go snorkeling on the way.

Day 4: Any Thursday (night @ Pulau Padar)

- After breakfast, we go for a 2 to 3 hour trek to Banu Ngullung to search for Komodo Dragons (*Varanus Komodensis*). This magnificent reptile, which can grow up to three meters in length and can weigh over 150 kg, is one of the few remaining links to the days when dinosaurs roamed the planet. We will also see Timorensis deer, wild boars and birds.
- We will have lunch and do some fantastic snorkeling at the famous pink beach, one of the most beautiful tropical locations around the world.
- In the afternoon, you will have the possibility to visit the authentic village of Komodo, meet the people, and buy some souvenirs:
- Sailing to Pulau Padar



Book now , any day , for as long as you like (for trips less than 3 nights an additional speedboat transfer fee of 15 US\$ one way applies)

Day 5: Any Friday (night @ Pulau Padar)

- Climb the rock of Padar, and let the amazing views over the park take your breath away.
 - Padar also hosts excellent beaches and snorkeling.
- In the afternoon, we take the speedboat to Rinca's Lehoc Gingga on the western side, where we recommend you go for a hike around the hills and along the beaches, see some small dragons and other wildlife such as wild boars, Sumba deer and even wild horses.



Day 6: Any Saturday (Night @ Karang Makassar or Gini Lawa Darat)

- We have an early morning start with a 2 hour hike through the wilderness of Rinca to search for wild Komodo Dragons, soaking up the sun around the springs. We will also look for wild water buffaloes, Feral horses, wild boars, Timorensis deer, crab-eating macaques and birds.
- We go back to the Mona Lisa for lunch and sail back to Karang Makassar, checking again for manta rays in the afternoon.



*From Bali to the heart of Komodo in 3 hours,
contact us for booking local flights!*



Day 7: Any Sunday (night @ mooring gili lawa darat)

- Returning customers transfer to Labuanbajo
- Guest that stay on board, will visit Tatawa Island for some nice snorkeling and beaches before returning to Gili Lawa Darat for the night.

Email us at info@komodocruises.com for availabilities, prices and all your questions.

We are happy to book your local flights for you.

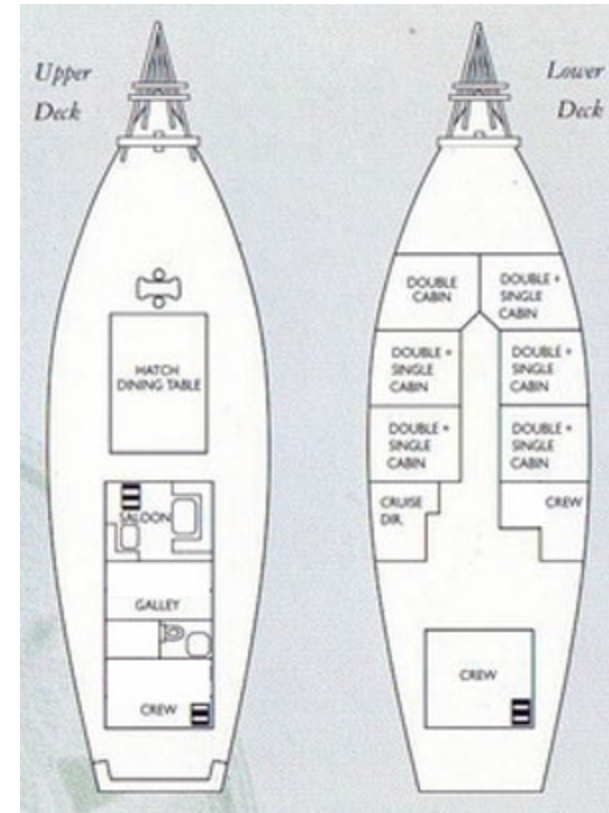
More info on the Mona Lisa and our other boats on www.komodocruises.com

SMY: Mona Lisa specification

This traditional wooden Phinisi schooner serves as a floating hotel, following a fixed 7-day diving or adventure program, which you can join for as many days as you like

Vessel specifications

- Total length: 33m / 109ft
- Length on deck: 27m / 89ft
- Beam: 7m / 23ft
- Draught: 3m / 10ft
- Rig: gaff rigged ketch
- Motorization: Mitsubishi 255 HP
- Cruising speed: 8.5 knots
- Maximum speed: 10 knots
- Generators: 2 x Mitsubishi 40 KWH
- Navigational equipment: GPS, Furuno radar, depth sounder
- Communication system: Single Side Band radio, satellite telephone
- Safety equipment: life-raft, life jackets, flares, first-aid box, oxygen, emergency evacuation plan with sea-plane
- Island Tenders: 2 x fiberglass, each with 25 hp outboard
- Dive tenders : Big semi planing fiberglass with inboard diesel engines
- Other Equipment: 2 dive compressors, nitrox membrane system , 2 water makers
- Electricity: standard European 220v outlets, adaptors available, limited 110v available.
- Accommodation: 12 guests in 6 teak wooden cabins (AC and en-suite bathroom)
- Common facilities: large living room with library, TV, DVD, Overhead projector, computer shaded main deck, sundeck with beach chairs
- Extras: laundry, towels, snorkeling equipment, sea kayak services
- International meals with fresh ingredients. Soft drinks , Water, coffee and tea available 24h
- The bar offers beer, wine and soft drinks



SMY Mona Lisa prices March - October 2008

Diving program:

274 USD / 198 EUR per person per night

Included

- Full service on board including 3 meals per day and snacks
- Transfer from Labuanbajo airport to vessel (For trips less than 3 nights an additional speedboat transfer of 15 USD applies one way)
- Water, coffee and tea available 24h/self service
- Tanks, weights, use of snorkeling equipment, sea kayak and zodiac services
- Western cruise director / dive master and the 9 crew members
- All excursions as specified in the program

Not included

- Transport to/from Bali airport
- Domestic flight from Bali to Labuanbajo
- Soft drinks and alcoholic beverages
- Personal expenses
- Rental of diving equipment (75 USD per week)
- Nitrox (150 USD per trip)
- Tips for the crew (about 15 USD per passenger)
- Komodo National Park entrance fees

Adventure program:

224 USD / 162 EUR per person per night

Included

- Full service on board including 3 meals per day and snacks
- Transfer from Labuanbajo airport to vessel (For trips less than 3 nights an additional speedboat transfer of 15 USD applies one way)
- Water, coffee and tea available 24h/self service
- Use of snorkeling equipment, sea kayak and zodiac services
- Western cruise director and the 9 crew members
- All excursions as specified in the program

Not included

- Transport to/from Bali airport
- Domestic flight from Bali to Labuanbajo
- Soft drinks and alcoholic beverages
- Personal expenses
- Tips for the crew (about 15 USD per passenger)
- Komodo National Park entrance fees